

Collection 2019



SAHCO

Sahco Collection 2019

Bringing a contemporary approach to elegant, classic interior has always been central to Sahco's design philosophy. While keeping the elevated quality and exquisite taste that is forever associated with Sahco, the design team strives to produce timeless and elegant fabrics that appeal to a discerning clientele. For 2019, the new creative team of Design Director Anna Vilhelmine Ebbesen and Art Director Vincent van Duysen have continued this tradition with a collection of textiles that are warm, rich and soulful and that will play their own role in homes across the world.

The six different upholstery fabrics play with texture and tactility. Irregular yarns of chenille and boucle add a tactile aspect to the surface, whilst a small graphic check in a cut and loop velvet is created by mixing mat and shiny yarns. Meanwhile a bold stripe in velvet explores either contrasting or tonal colours, allowing furniture to be as striking or discrete as you wish. Vincent van Duysen has exclusively designed two new upholstery fabrics – *Clay* and *Moss* – that use uneven yarns in strong contrasts to create a deep and luxuriously textured surface. By using colours inspired by Duysen's own home and the beautiful works of Belgian artist Michael Borremans, the design team brings together the worlds of art and interiors – a meeting that will continue to drive the creative direction of Sahco.

The six fabrics of the 2019 curtain collection also use texture to add a sumptuous and luxurious air. Matt and shiny surfaces interact to create beautiful floral designs while delicate linen becomes sheer in its lightness. At the other end of the scale, a bold graphic print provides a powerful statement in strong earthy colours or more muted neutral shades. The diversity of the collection, with its complex jacquards, sophisticated colour combinations and manifold surfaces offers a huge opportunity to create exciting and beautiful interiors.

Throughout the whole collection, the richness of colour adds to the sense of texture and warmth. Rich earthy tones such as rust, charcoal, clay and khaki are mixed with the deep hues of various woods and are contrasted with more intense shades of brick red, cinnamon and sage green. Multiple shades of natural white and hues of smoky grey and blue provide serenity alongside more vivid colours, resulting in a harmonious, refined palette. The combination of texture and structure further enhances the beauty of the colour palette.



Cuba 18, Jade 01, Velvet 04, Bro8 Twist, Silkwood 29, Shell reversible 06



Clay 07, Opal 01, Cuba 02, Silkwood 24, Gem 01, Moss 05



Perla 05, Bio8 Citrus, Opal 04, Silkwood 25, Moss 21



Opal 03, Jade 12, Safire 11, Shell reversible 06, Safire 07, Proof 04



Moss 12, Jade 04, Velvet 05, Mica 04, Moss 08, Jade 03



Reed 06, Jade 10, Safire 17, Jade 12, Jade 11, Safire 11



Perla 08, Moss 09, Silkwood 26, Moss 10, Safire 12, Gem 04, Shell reversible 01



Jade 12, Moss 03, Velvet 01, Jade 01, Jade 11, Gem 05



CLAY

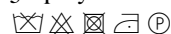
Clay is one of the two fabrics created by Sahco's new creative team – art director Vincent van Duysen and Design Director Anna Vilhelmine Ebbesen. Bringing together natural beauty and a sense of finesse, the creative team mixed colours of yarn in warp and weft to create an elegant yet casual fabric. The result has a unique structured surface that adds an extra dimension to any interior design scheme. With a back cloth that gives extra stability, *Clay* is perfect for upholstering furniture. The colours are inspired by the designer's love of art and interiors and include cool shades of cement, blue, and salvia but also the natural shades of wood and clay.

Article no. 600662

Colours 17

Width 140 cm / 55"

Material 76% linen, 21% cotton, 3% polyester



GEM

The translucent quality of the linen mix fabric gives *Gem* a particular beauty, especially when combined with its subtle jacquard design. The special Maltinto technique of dyeing creates a unique handcrafted look with gentle irregular shading effects. *Gem* is double-width, opening up many possibilities of use, and comes in nine colours – five natural tones and four sophisticated dark shades that highlight the jacquard design.

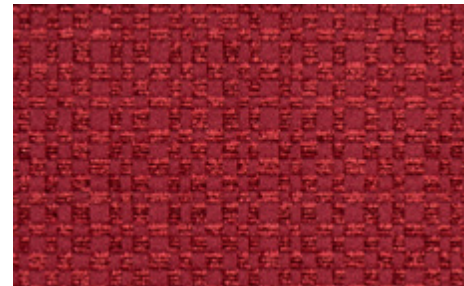
Article no. 600656

Colours 9

Width 310 cm / 122"

Repeat 33 cm / 13"

Material 80% linen, 20% polyester



JADE

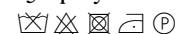
The irregular chequerboard design of *Jade* lends the fabric an animated and lively character due to the combination of soft matt chenille yarn and smooth shiny polyester in the warp and weft. The effect is that of an embossed upholstery fabric which gives surface interest to a clear plain colour and feels soft to the touch.

Article no. 600629

Colours 16

Width 140 cm / 55"

Material 45% cotton, 30% viscose, 25% polyester



PERLA

Perla is a romantic semi-transparent jacquard fabric with a dry, structured cotton-polyester ground scattered with floral motifs. The blossom designs are picked out in soft chenille yarn using the Scherli technique which gives them a subtle sheen, contrasting beautifully with the drier background. The special technique of piece dyeing creates a vintage hand-crafted look, deepened by a colour range of poetic shades such as midnight blue, forest green, corn gold and soft smoky pastels.

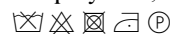
Article no. 600658

Colours 9

Width 295 cm / 116"

Repeat 20 cm / 8"

Material 14% cotton, 7% nylon, 16% polyester, 63% viscose



REED

This upholstery fabric has a small, graphic design created by interweaving two contrasting yarns. The linen in the construction of *Reed* gives the fabric a grainy textured appearance, when mixed with cotton and viscose, which adds to its natural handle. Nine colourways range from classic to more dynamic.

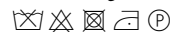
Article no. 600649

Colours 9

Width 134 cm / 53"

Repeat 2 cm / 1"

Material 56% cotton, 26% viscose, 18% linen



SAFIRE

Safire's coarse surface structure gives the fabric a subtle handwoven appearance that is both unique and dynamic, adding a special and unique dimension to this upholstery fabric. The thick boucle and chenille yarns contribute to its woolly handle and soft appeal but also gives a vibrant two-tone effect. The colour palette includes both quiet natural shades and strong, bold combinations.

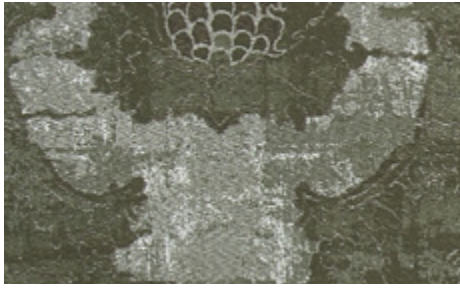
Article no. 600657

Colours 17

Width 140 cm / 55"

Material 43% viscose, 17% polyacrylic, 15% wool, 9% cotton, 8% polyester, 8% linen





MICA

Classic and elegant, the ornamental *Mica* upholstery fabric has a vintage look reminiscent of the patinas of different surfaces, a characteristic highlighted by its silk, linen and cotton construction. The jacquard medallion motifs are framed by florals, arranged in a broad repeat on an irregular broken background. The four colourways include deep midnight or steel blue, juniper green and a delicate ivory shade.

Article no. 600668

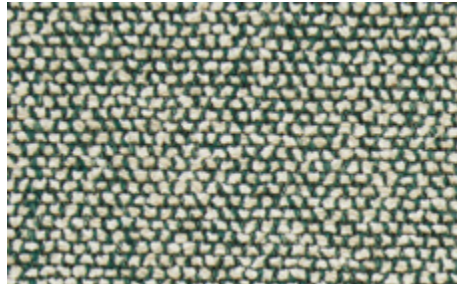
Colours 4

Width 140 cm / 55"

Repeat 80 cm / 31"

Material 36% linen, 30% cotton, 20% silk, 14% viscose

☒ ☒ ☒ ☒ ☐ (P)



MOSS

The second design by Vincent van Duysen and Anna Vilhelmine Ebbesen is the distinctive upholstery fabric *Moss*. The mixture of twisted yarn and chenille gives the fabric surface a textured structure with an appearance of movement, and also creates a soft handle which adds a special dimension to the furniture it covers. The twenty-two colourways are either one- or two-tone combinations inspired by Vincent van Duysen's own home and range from cool cement and soft blue to oily green, curry yellow and the shades of natural wood.

Article no. 600664

Colours 22

Width 135 cm / 53"

Material 52% cotton, 22% viscose, 14% acrylic, 6% linen, 3% polyamide, 3% polyester

☒ ☒ ☒ ☒ ☐ (P)



OPAL

Bold and dramatic, *Opal* is an eye-catching decoration fabric with a lush drape. An oversized design of abstract leaves is picked out in a jacquard of different weaves with matt and shiny contrasts, created by mixing linen-viscose and soft silk yarns. Two colourways are tonal in earthy hues or shades of blue whilst the other two are stronger with multicoloured or olive camouflage variations.

Article no. 600666

Colours 4

Width 142 cm / 56"

Repeat 81 cm / 32"

Material 48% linen, 46% viscose, 6% silk

☒ ☒ ☒ ☒ ☐ (P)



SHELL (reversible)

This elegant drapery fabric is given an extra dimension with its reversible nature. One side, made from cupro, has a silky, shiny appearance with an irregular satin construction that highlights its fluidity. The reverse provides a contrast with a matt linen-cotton mix surface. The contrasting aspects give Shell a unique handle that is by turns soft and dry. Its palette comprises eight colours with both soft natural shades and stronger earthy hues.

Article no. 600659

Colours 8

Width 310 cm / 122"

Repeat 62 cm / 24"

Material 32% cotton/ 35% cupro/ 33% linen

☒ ☒ ☒ ☒ ☐ (P)



SILKWOOD

This classic *Silkwood* is one of the Sahco's best-selling articles. The satin weave of 100% wool gives the fabric a sophisticated sheen that catches the light whilst at the same time allowing the fabric the suppleness to drape in an elegant way. The fabric is perfect for both curtains and upholstery and now features twelve new shades alongside a selection of classics.

Article no. 600007

Colours 18

Width 140 cm / 55"

Material 100% wool

☒ ☒ ☒ ☒ ☐ (P)



VELVET

Velvet's striking irregular stripes are created using the cut and loop technique, giving a depth to the fabric that creates both visual and textural interest. The viscose pile in the warp gives an elegant sheen to the fabric and adds to its soft handle. The five colourways range from subtle tone-on-tone shades to stronger graphic contrasts, giving the high-quality fabric the versatility to work in many interior colour stories.

Article no. 600660

Colours 5

Width 142 cm / 56"

Material 82% viscose, 18% polyester

☒ ☒ ☒ ☒ ☐ (P)

Sahco Brand Story

Exquisite taste, elevated quality and a refined sense of luxury – these are the principals on which Sahco was founded. Using classical references as a starting point but always infusing them with an elegant, contemporary touch, Sahco has nearly two hundred years of experience in the world of textiles and interior textiles. Throughout that time period, they have carved a name for themselves as a premium fabric decor company: one that has found its place in the hearts and homes of discerning customers across the world.

Sahco's story starts in 1831 when the company's founder decided to build on generations of his family's knowledge of the textile trade and set up his own business in Southern Germany. Together with his son, he specialised in importing fine carpets, silks and upholstery fabrics from both France and the Far East, slowly building up a business that survived the economic and social turmoils of Europe to become truly international. By the end of the Twentieth Century, the company had worldwide distribution emanating from its new headquarters in Nuremberg and its showrooms in Paris, London, Milan and Munich.

Serving the needs of a cosmopolitan audience who demand elegant, contemporary design in the best possible quality. Rich textures, sophisticated colours and classic design characterise textiles that speak of timeless appeal and refined taste. Soft neutral colours are used as a base for many designs, with bolder graphic details adding the interest but always staying within the realms of simple and harmonious design. Regularly used by leading interior designers, architects and furniture manufacturers, Sahco fabrics have found themselves in the most beautiful homes, hotels and even yachts with the world, safe in the knowledge that their luxurious appeal adds the perfect touch.

In May 2018, Sahco was acquired by Kvadrat, one of the world's leading design textile companies based in Denmark. With a new creative team in place and the shared knowledge of two rich design heritages, Sahco enters an exciting new phase in its long history.